

Operators Manual



UC6 (Revision 1-6)



ZipRIP hardware and software is the property of SMA (Pty) Ltd. Australia P.O.. Box 774, Fyshwick 2609, ACT. Australia

This documentation or any part of it may not be reproduced, stored or transmitted in any form, including but not limited to electronic, photocopying, mechanical copying, electrostatic copying, recording or other means without express written permission of SMA (Pty) Ltd. Australia.

Windows is a registered trademark of Microsoft Corporation. Macintosh is a registered trademark of Apple Computers Incorporated. Other brand or product names throughout this document, are trademarks or registered trademarks of their respective holders.

Ricoh and Priport are registered trademarks of Ricoh Japan.

Table of Contents

Introduction	4
Basic Specification	5
Safety Information	5
Digital Duplicator Driver Group	6
Components for the UC6	7
Basic Operation	8
Paper Tray Selection	9
Printing on a PC	10
Printing on a Mac	11
UC6 PC Printer Driver Installation	12
Installing driver for Windows 95/ME	13
Configuring the printer	16
Installing driver for Windows NT	23
Configuring the printer	29
Installing driver for Windows 2000	36
Configuring the printer	42
Installation on an Apple Macintosh	51
Postscript Fonts	54
Frequently Asked Questions	56
Troubleshooting Postscript	59

Introduction

The UC6 is a high speed interface for all Digital Duplicators. This significantly improves the quality of the printed material as well as speeding up the printing of jobs.

The UC6 modular design incorporates Apple Macintosh and IBM networking connectivity. The UC6 uses postscript ripping to support printing from any application software.



Basic Specifications

Printer Language: Postscript and Apple Talk
Supported Resolutions: 300, 400, and 600 dpi.
Networking: TCP/IP, NETBUI, IPX/SPX and Apple Talk
Supported Drivers: Win95/98/ME, Win2000, WinNT
Ports: 10/100mbit Ethernet Port
On Board Memory: 64 MB
Processor: 500MHz Processor
Digital Duplicator Brands: Ricoh, Gestetner, Rex Rotary, Nashuatec, Savin and Standard
Certification CE, cCSAus
Supply Voltage 110 or 220 Volts switchable

Safety information - Battery:

- Danger of explosion if battery incorrectly replaced.
- Replace only with the same or equivalent type recommended by the manufacturer.
- Dispose of used batteries according to the battery manufacturer's instructions.

Renseignements de sécurité - Pile:

- Danger d'explosion si pile a remplacé incorrectement.
- Remplacez seul avec le même ou équivalent écrit à la machine recommandé par le fabricant.
- Disposez de piles d'occasionnes d'après les directives des fabricant de la pile.

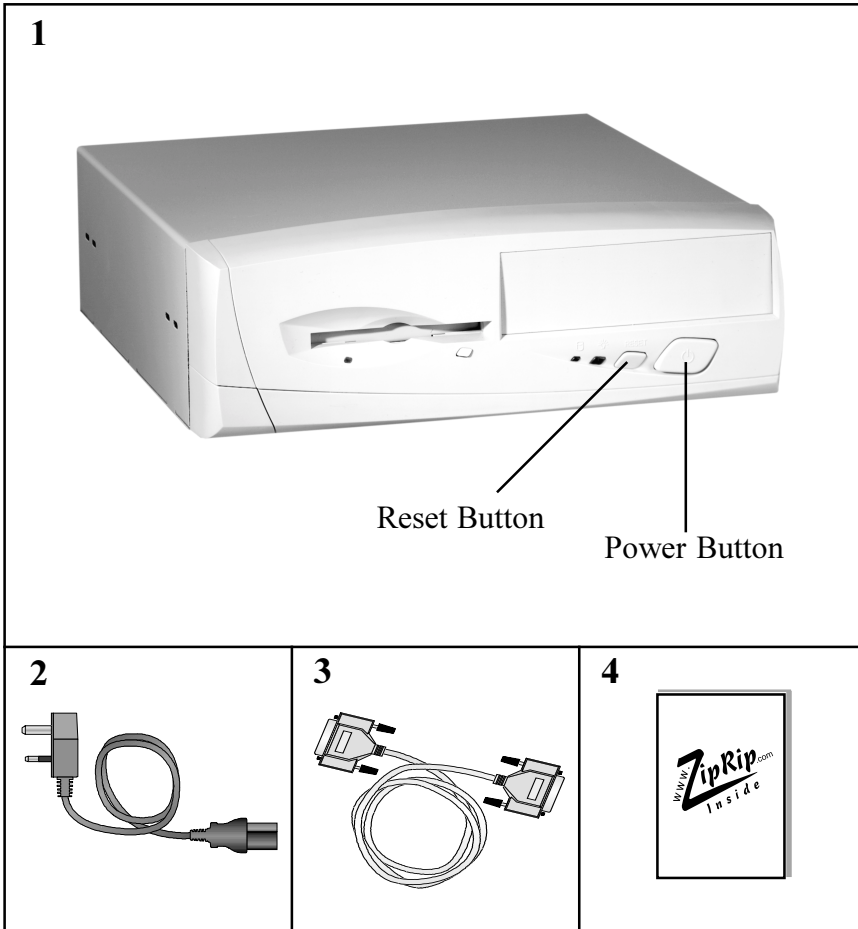


Digital Duplicator Driver Groups

Driver Name	Model	Digital Duplicator Model
ZipRIP Classic A	C224	VT2200/5327/1252/CP327/3200DNP
	C226	VT2250/5329L/2546/CP329L/325DNP
	C222	VT2400/5360/1270/CP360
ZipRIP Classic B	C210	VT3500/5375/1280/CP375
	C218	VT3600/5380/1285/CP380
	C223	VT3800/5385/1290/CP385/330DNP
ZipRIP Classic X	C228	VT6000/5390/1295/CP390/3400DNP/SD600
ZipRIP Pro A	C231	JP1010/5306/1224/CP306
	C237	JP1210/5308/1225/CP308
ZipRIP Pro B	C231	JP1030/5306L/1224L/CP306/3150DNP/D300
	C231	JP1050/5306B/1224B/CP306B
	C237	JP1230/5308L/3150eDNP/SD330
	C237	JP1250/5308B/1225B/CP308B
ZipRIP Pro C	C229	JP5000/5450/1560/CP450/3350DNP/SD400
	C239	JP5500/5450/5455/1560/CP450/3360DNP/SD450
ZipRIP Pro C PT	C232	JP5800/5480/1580/CP480
	C239	JP5500/5450/5455/1560/CP450/3360DNP/SD450
ZipRIP Pro E	C238	JP3000/5430/1330/CP430/3260DNP/SD370 JP3800/5428C (China)
ZipRIP Pro X	C235	JP8000/5490/1395/CP490/3450DNP/SD630
	C244	JP8500/5490+/5499/1395+/CP490+/3460DNP/SD650
ZipRIP Pro X PT	C235	JP8000/5490/1395/CP490/3450DNP/SD630
	C244	JP8500/5490+/5499/1395+/CP490+/3460DNP/SD650

*Models with suffix PT indicate additional paper tray unit installed

Components for the UC6



1. UC6
2. Power Cable
3. Data Cable
4. Installation Instructions

Basic Operation

The UC6 is ready for use after all the installation procedures have been completed, and the relevant UC6 driver for the Digital Duplicator has been loaded.

Powering the UC6 ON and OFF.

The following power on and off procedures need to be followed:

ON

Ensure the UC6 is connected to the network, that its power cable is correctly connected and it is connected to the Digital Duplicator. Press the POWER button on the front of the UC6. Wait approximately 2 minutes for the UC6 to boot up. The UC6 is then ready to make network connections.

OFF

Press the RESET button on the front of the UC6. When a beep is heard (6 seconds) press the POWER button on the front of the UC6.

NOTE:

The reason that the UC6 MUST be powered down in this manner is to enable the UC6 to disconnect from active network connections. By pressing the RESET button first and waiting the 6 seconds, the UC6 can prepare for power down.

If the power button is pressed before the reset button, then the UC6 will become unresponsive.

Paper Tray Selection

A specific tray will need to be selected when the following situation occurs:

There are front loading trays installed on the Duplicator and a particular tray is specified.

The paper tray options are listed below with a description of how the selection effects the printing:-

- * Auto Select When this tray is selected the UC6 will select a tray based on the paper size chosen in the driver.
- * Paper Table This tray can be selected if the duplicator has no additional Paper Trays installed. It will select the standard Paper Table.
- * Paper Table PT This tray can only be selected if the duplicator has additional trays installed. It will select the Paper Table.
- * Tray 1 The duplicator must have the additional tray unit installed to select this tray. It will select the top tray of the additional tray unit.
- * Tray 2 The duplicator must have the additional tray unit installed to select this tray. It will select the bottom tray of the additional tray unit.

NOTE:

The paper trays available for selection depend on which Duplicator type is selected in the print option or printer features in the print dialogue box.

Printing on a PC

To print to the UC6, select the print option from the file menu of the application. In the print dialogue window select the UC6 that is installed. Provided driver is set up as per the section "Configuring your driver" located at the end of the driver installation procedure, the duplicator type and resolution will be correct for the duplicator.

Specific options can be selected in the properties or options of the printer relating to the duplicator connected. These options can be selected provided the duplicator supports these features. These are Economy Mode, Skip Feed Mode, Auto Cycle and Duplicator Print Speed.

NOTE:

The printing speeds available are Slow, Normal and Fast. If the Duplicator has five (5) different speed options the UC6 will set speed 1 on the Duplicator for Slow Speed, speed 3 for Normal Speed and speed 5 for Fast Speed.

Once the selection has been made press print or OK, depending on the application. The file is processed by the UC6. When printing to a ZipRIP Pro X Duplicator type, the green LED will flash on the front of the Duplicator. Once this is complete a master will be made by the Duplicator and output the quantity of prints (copies) specified.

NOTE:

It is important that the resolution and Digital Duplicator selection in the driver matches the Digital Duplicator connected to the UC6. Incorrect settings will result in the print being too large or too small.

Printing on an Apple Mac

NOTE:

Before printing to the UC6 from an Apple it is important to go into the **Laser Writer 8 Page Setup** on any application and ensure that the correct size paper is selected under page attributes.

In the print dialogue box under the "GENERAL" section the paper tray option is selectable. Paper Tray Selection is detailed in the previous section.

If font download problems occur on the UC6, follow the steps below:-

1. In the Laser Writer 8 page setup which is located in the file menu under page setup.
2. Set "Unlimited Down loadable Fonts" in the postscript options.
3. Select Print from the file menu. Select the UC6 printer.
4. In "**General**" you can select the number of copies you want to print.
5. In "**Font Settings**" you must select "**Always download needed fonts**".
6. In "**Save as file**" select "**Level 1 compatible**", Data format to "**Binary**" and Font Inclusion to "**All**".
7. In Print Options 1 you can select the printer you are printing to and the resolution.
8. In Print Options 2 you can select Digital Duplicator settings e.g. Skip Feed Mode, Economy Mode, Duplicator Speed. These settings are user defined.
9. Select "**FILE**" in the "**Destination**" option.
10. Select "**SAVE**".
11. When the Apple prompts to select where to save the *.PS file it has created, select the UC6 folder showing on the Desktop.
12. The file will be processed and printed to the UC6.

UC6 PC Printer Driver Installation

NOTE:

Before beginning the driver installation ensure that there is the correct Windows Operating System CD handy.

First install the UC6 hardware, then install a printer driver. Please follow the instructions relating to the operating system installed on all the PCs connected to the network.

The following pages will give detailed and illustrated instructions on how to install the Printer drivers for the following operating systems:-

Windows 95/98/ME

Windows NT

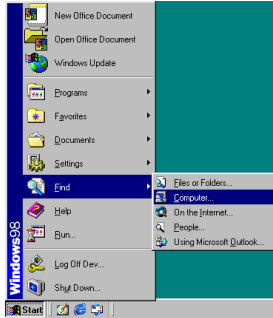
Windows 2000

Installing Drivers for Windows 95/98/ME

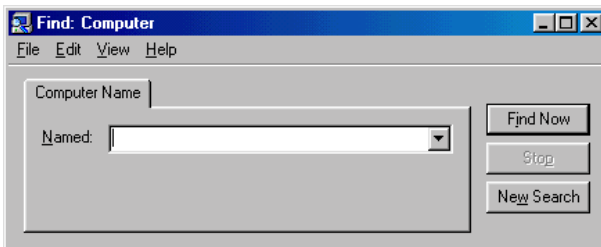
To install the UC6 follow the instructions described below.

1. Select "Computer" from the "Find" option on the "Start" menu.

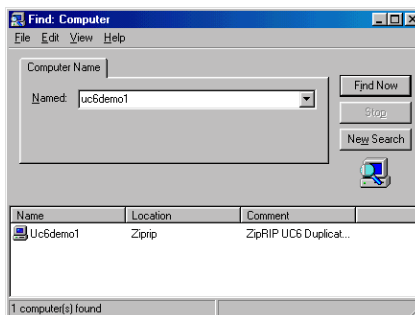
Note: Some Operating Systems have the "Find Computer" option under the "Network Neighbourhood" or "Network Places" icon.



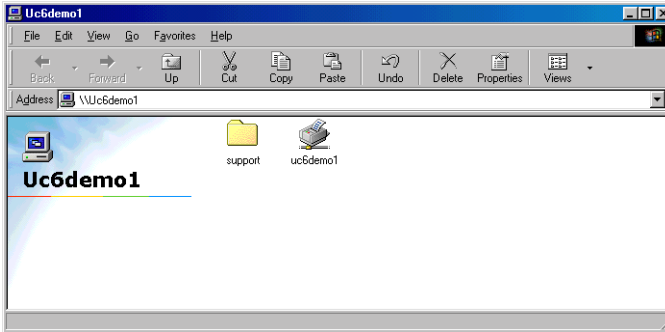
2. In the "Find:Computer" window type in the name of the UC6 where prompted. The UC6 network name is located on a sticker on the front of the UC6. Click "Find Now".



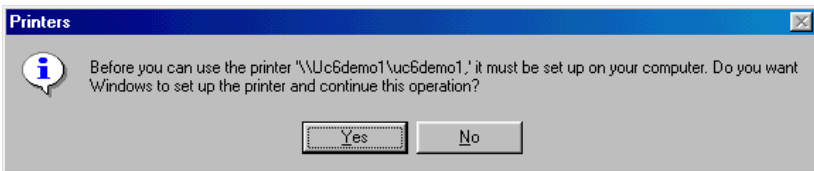
3. The "Find:Computer" window will display the UC6 in the bottom section as a computer icon with the network name, once it has been located on the network. Double click on the UC6 computer icon.



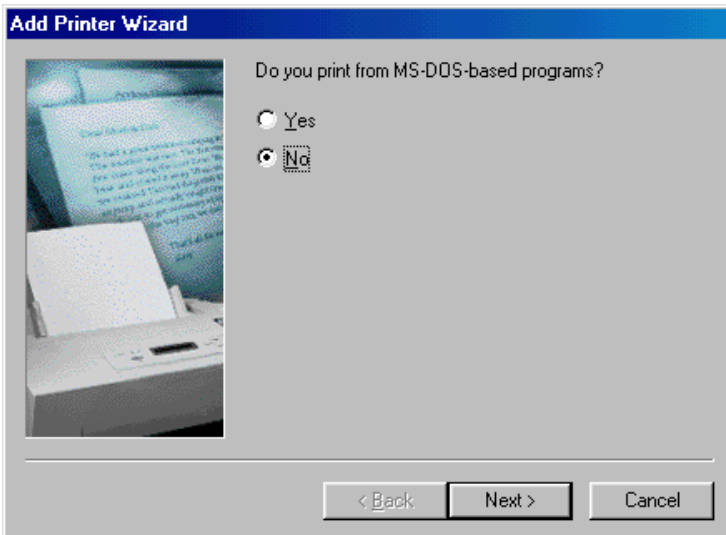
- The following window will display the folder named "Support" and the UC6 printer. Double click the UC6 printer.



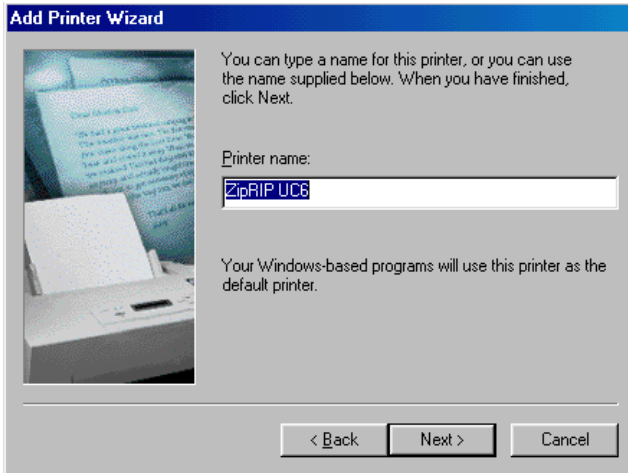
- Select "Yes" for Windows to continue set up.



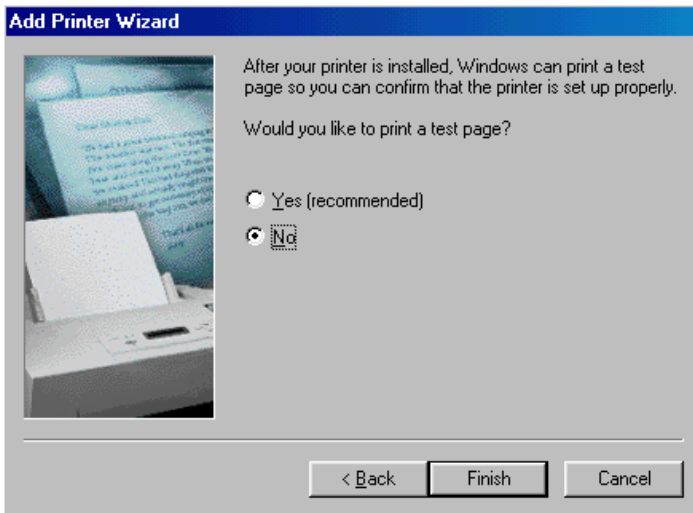
- The "Add Printer Wizard" will open asking: "Do you print from MS-DOS-based programs?" Select "No".



- Click "Next" selecting the "Printer name".



- Select "No" in the following dialogue box when prompted to print a test page. Click "Finish". The installation of the UC6 printer is complete.

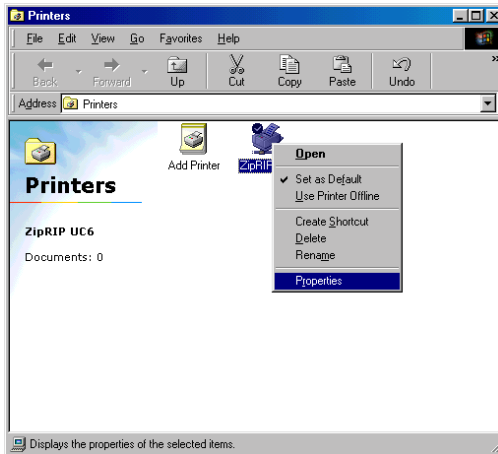


Configuring the Printer

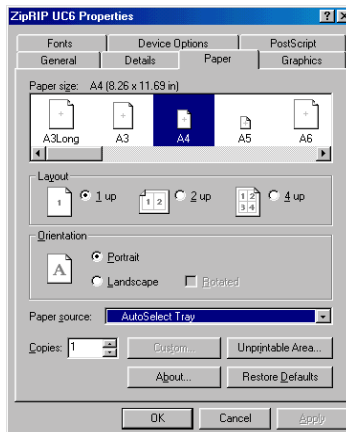
NOTE:

If the Duplicator Model does not support certain of the features set out below, a red warning sign will appear next to the selectable option.

1. Select "Printers" from the "Settings" option of the "Start" menu. The UC6 printer installed will be displayed. Select the UC6 printer and right click. Select "Properties" from the dropped down menu.

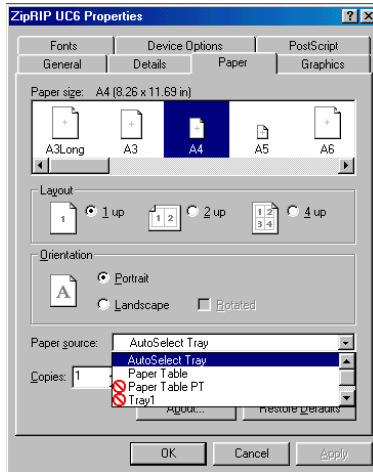


2. The "Properties" dialogue box consists of several tabs. Select the "Paper" tab. At the "Paper Size" setting, choose the size of paper most frequently used.



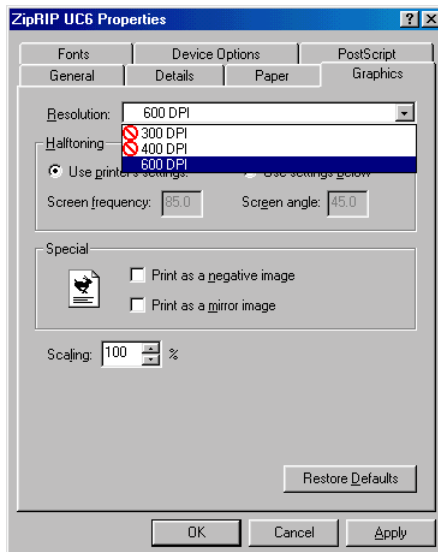
- At the "Paper Source" setting, choose "Auto Select Tray".

NOTE: Description of the different trays and their functionality is in the Basic Operation section of this manual.



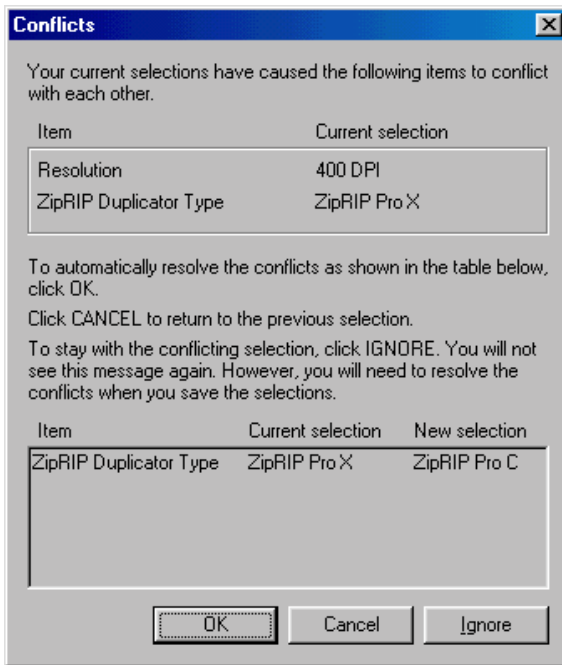
- Select the "Graphics" tab. Locate the "Resolution" setting. The installation default setting is "600". Select the resolution of the Duplicator.

NOTE: This setting works in conjunction with the "ZipRIP Duplicator Type" setting under the "Device Options" tab.



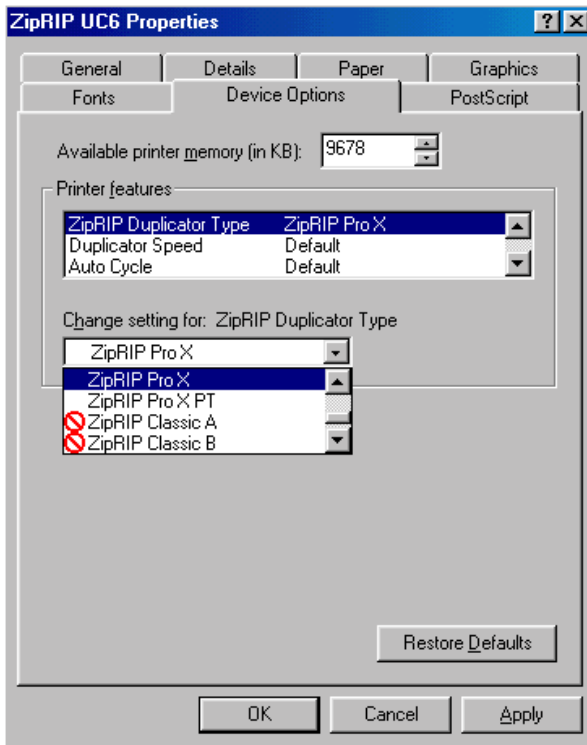
- The UC6 driver automatically presents a warning if the "Resolution" setting does not match the "ZipRIP Duplicator Type" setting. The "Conflict" dialogue box will appear. Selecting "Ignore" will not change the resolution which has been set - the "ZipRIP Duplicator Type" has to be set manually. Selecting "OK" will automatically change the "ZipRIP Duplicator Type" to a machine of the resolution set.

Note: There are often more than 1 "ZipRIP Duplicator Type" with the same resolution. The automatic change should be checked for accuracy.



- Select the "Device Options" tab. This section contains all the Digital Duplicator specific options when printing. These are "ZipRIP Duplicator Type", "Duplicator Speed", "AutoCycle", "Economy Mode" and "Skip Feed Mode". These features can be changed each time you print from any application.

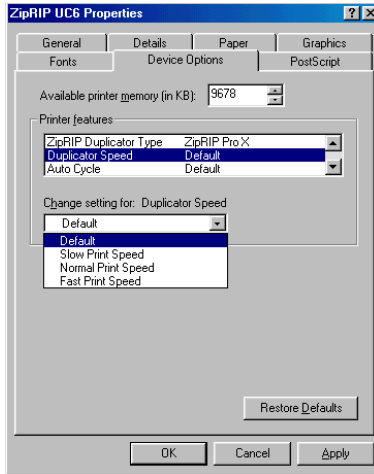
- Setting the "ZipRIP Duplicator Type" - This selection works in conjunction with the "Resolution" setting. The installation default is "ZipRIP Pro X". Determine the generic name of the Duplicator you are printing to. Refer to page 6 of this manual. Click on the "ZipRIP Duplicator Type" setting. The types of duplicators available for selection will depend on the resolution setting.



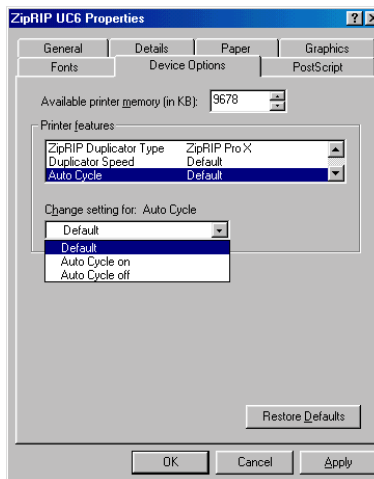
- The duplicator types with a red warning sign next to the name indicating that the resolution does not match. When selecting one of these duplicators a warning dialogue box will appear, indicating that a conflict has occurred.

This conflict dialogue box will automatically select a "ZipRIP Duplicator Type" that matches the "Resolution" set in No. 4 when clicking "OK".

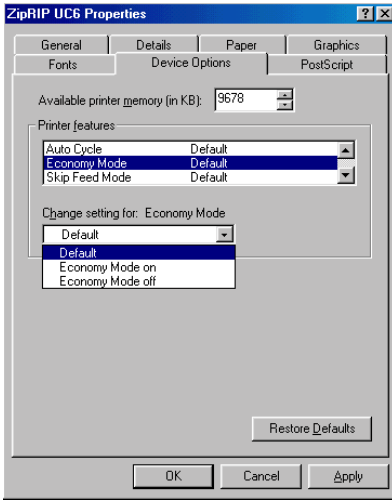
- Setting the "Duplicator Speed" - The installation setting for this is "Default". When "Default" is set, the UC6 will not change the speed set on the Duplicator's control panel. Select the speed most frequently used.



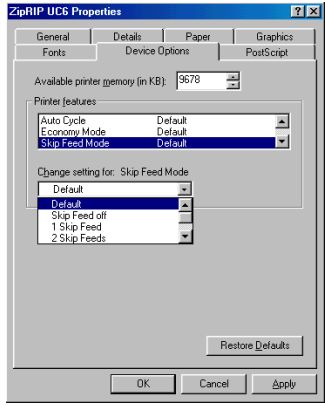
- Setting "AutoCycle" - The installation setting for AutoCycle is "Default". When "Default" is set the UC6 will not change the Autocycle setting on the Duplicator s control panel. Selecting "Autocycle ON", will always turn Autocycle ON when the UC6 sends a print job to the Duplicator. Setting "AutoCycle OFF" will always turn Autocycle off when the UC6 sends a print job to the Duplicator.



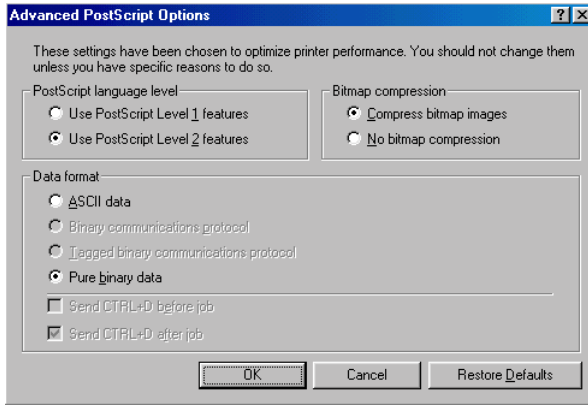
11. Setting "Economy Mode" - The installation setting for Economy Mode is Default . When Default is set the UC6 will not change the Economy Mode setting on the Duplicator s control panel. Selecting Economy Code ON , will turn Economy Mode ON when the UC6 sends a print job to the Duplicator. Setting Economy Mode OFF will turn Economy Mode off when the UC6 sends a print job to the Duplicator.



12. Setting Skip Feed Mode - The installation setting for Skip Feed Mode is Default . When Default is set the UC6 will not change the Skip Feed Mode setting on the Duplicators control panel. Selecting Skip Feed Mode OFF , will always turn Skip Feed Mode OFF when the UC6 sends a print job.



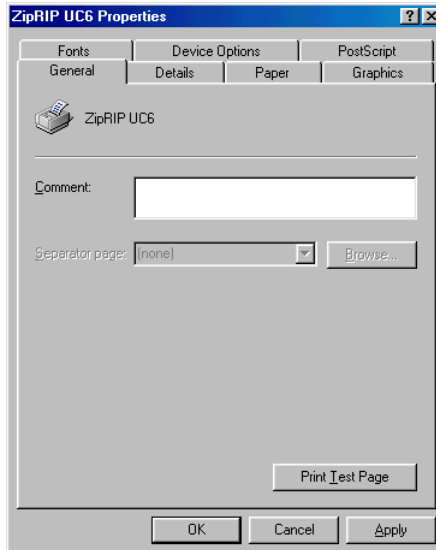
13. Select the Postscript tab. Click on Advanced , and ensure that Data Format is set to Pure Binary Data . Click OK .



14. Click OK once all selections have been made. These settings will remain as default settings each time a print is selected from an application.

Note: Some applications save the print settings applied in a document.

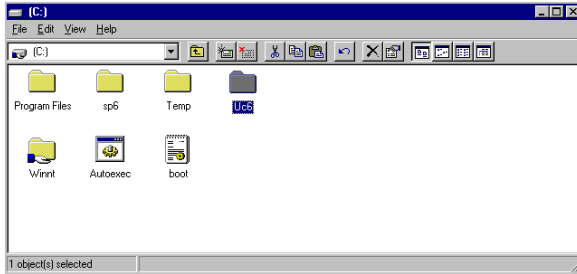
15. Select Print Test Page under the Generals tab. A test page will print on the Duplicator. The UC6 is now set up and ready to use.



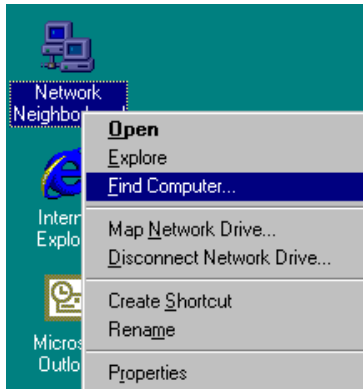
Installing Drivers for Windows NT

To install the UC6 follow the instructions described below.

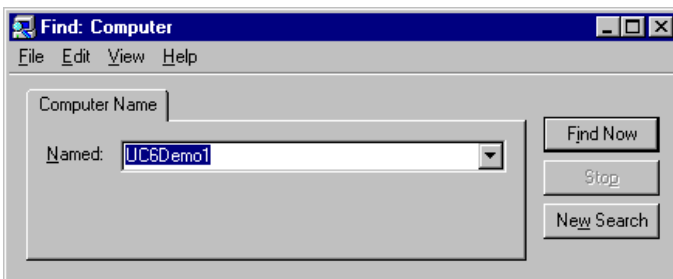
1. Create a folder on the C drive of the client computer called UC6.



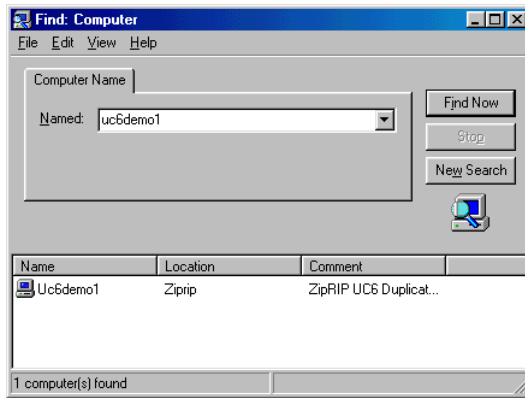
2. Right click on the Network Neighbourhood icon on the desktop and select Find Computer from the menu options.



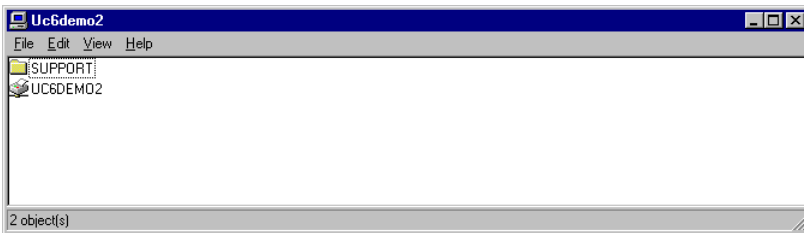
3. In the Find Computer window type in the name of the UC6 where prompted. The UC6 network name is located on a sticker on the front of the UC6. Click Find Now .



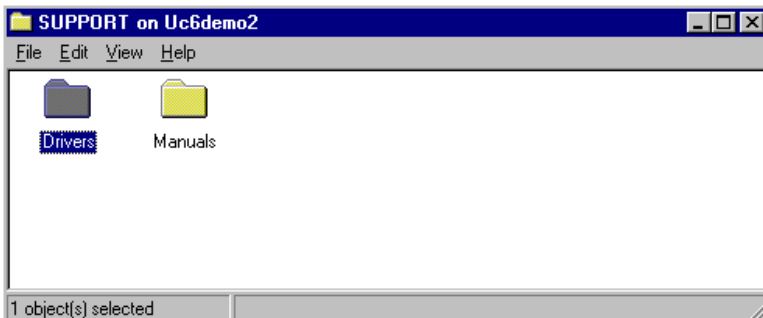
- The Find Computer window will display the UC6 in its bottom section as a computer icon with the network name once it has been located on the network. Double click on the UC6 computer icon.

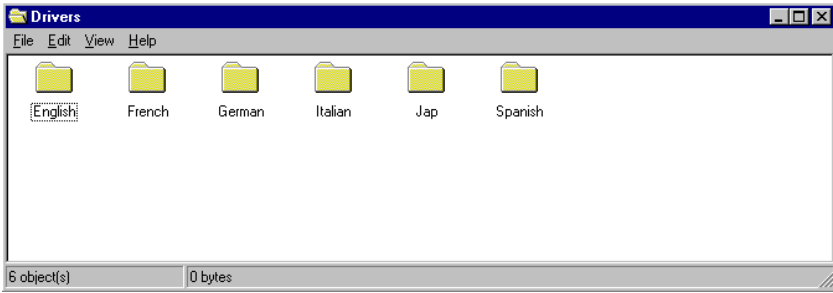


- The following window will display the folder named Support and the UC6 printer. Double click the Support folder.

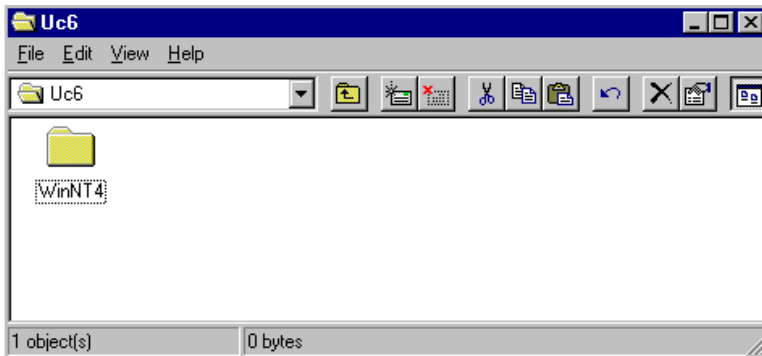
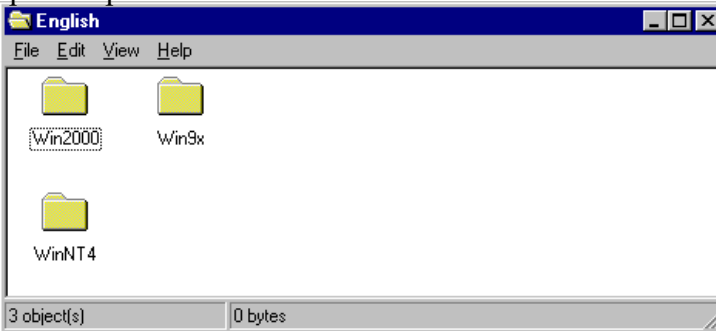


- Double click on the Driver folder and select the language to be installed.

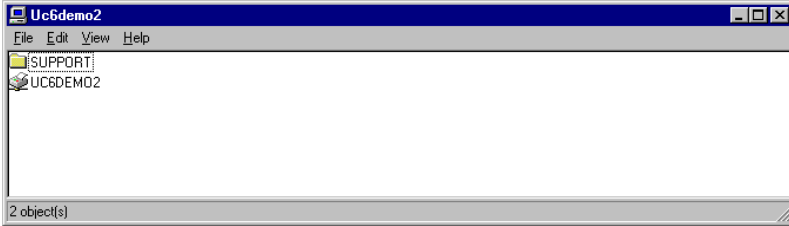




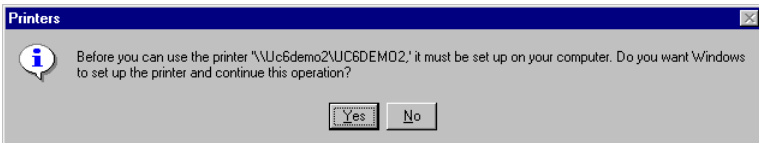
7. Copy the "Win NT4" folder from the selected language into the UC6 folder on the C drive.
8. Repeat steps 2 to 4.



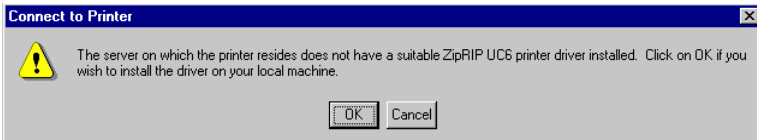
9. The following window will display the folder named Support and the UC6 printer. Double click the UC6 printer icon.



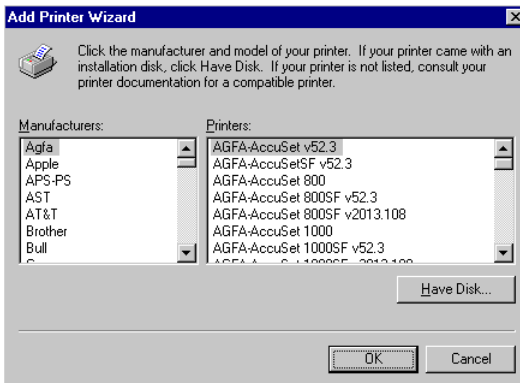
10. A window will be displayed informing you that before you can use the printer you need to set it up on your computer. Click Yes .



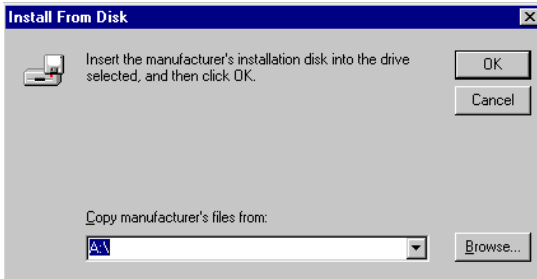
11. Click OK in the Connect to Printer window.



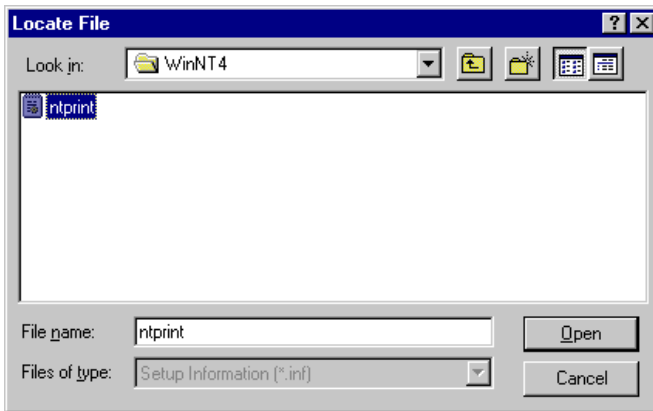
12. The next dialogue box shows a list of printer manufacturers and models. Click Have Disk .



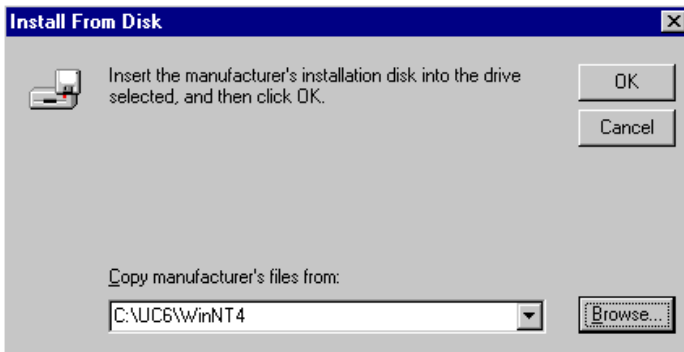
- In the dialogue box that follows select **Browse** to locate the UC6 driver installation file.



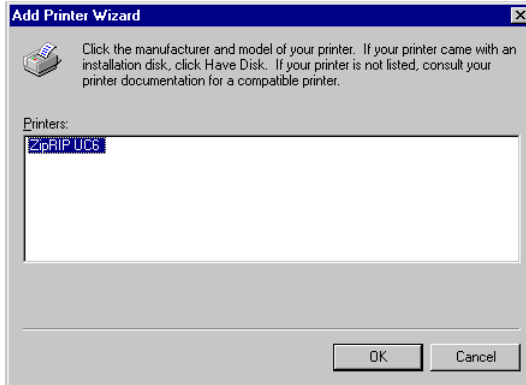
- Select the `ntprint` file from the WinNT4 folder copied onto your hard drive on the C drive and click **Open**.



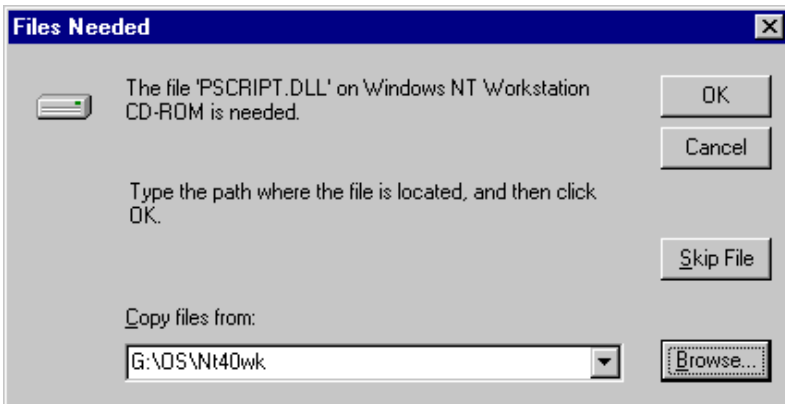
- The **Install from Disk** dialogue box should have the following in **Copy manufacturer s files from:** , `C:\UC6\WinNT4`. Select **OK**.



16. Select the "ZipRIP UC6" from the Printer window and click "OK".



17. The driver installation will begin. You will be prompted to insert your Windows Operating System Disk for system files needed. Click "OK" once you have inserted your system disk.

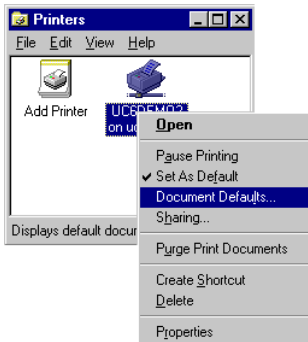


18. The driver installation will be completed. Close all dialogue boxes. The UC6 printer can now be configured for printing.

Configuring the Printer

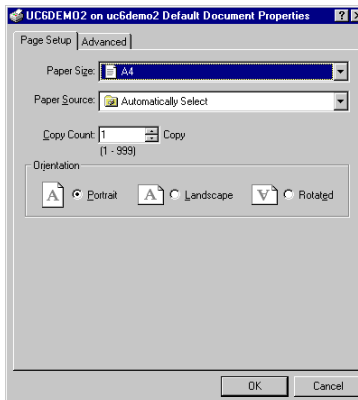
Note: If the Duplicator Model does not support certain of the features set out below, a yellow warning sign will appear on the icon next to the selectable option.

1. Select "Printers" from the "Settings" option of the "Start" menu. The UC6 printer installed will be displayed. Select the UC6 printer and right click. Select "Document Defaults" from the dropped down menu.



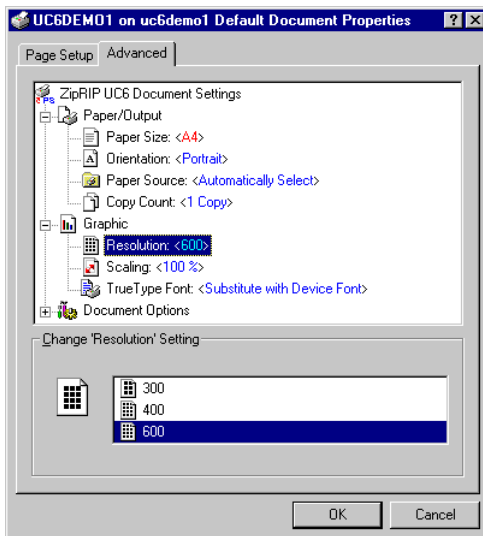
2. The "Document Default Properties" are set in this dialogue box. In the "Paper Size" setting, choose the size of paper most frequently used, in the "Paper Source" setting, choose "Automatically Select". These two settings will become the default settings in the print window in any application.

Note: These options can be changed each time you print from your application.



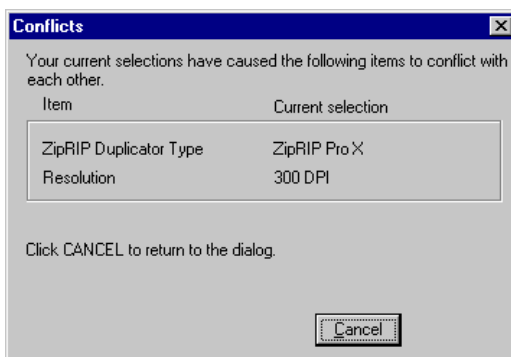
3. Click on the "Advanced" tab.
4. Locate the "Resolution" setting under "Graphic". The installation default setting is "600". Select the resolution of your Duplicator.

Note: This setting works in conjunction with the "ZipRIP Duplicator Type" setting under the Document Options "Printer Features".

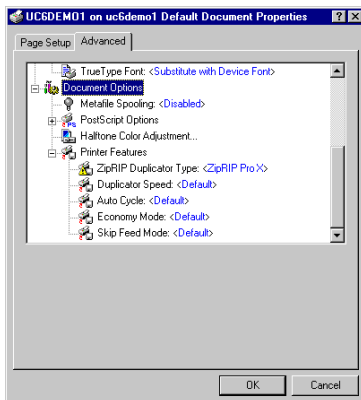


5. The UC6 driver automatically presents a warning if a "Resolution" does not match with the "ZipRIP Duplicator Type" setting. The "Conflict" dialogue box will appear. Select "Cancel".

Note: The driver will not change the Duplicator type automatically, the duplicator type should be manually set.

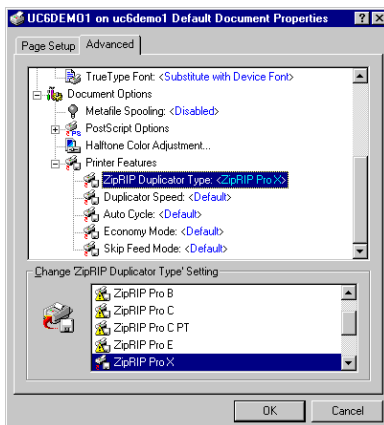


6. Scroll down to the "Printer Features" section. This section contains all the Digital Duplicator specific options when printing. These are "ZipRIP Duplicator Type", "Duplicator Speed", "AutoCycle", "Economy Mode" and "Skip Feed Mode". These features can be changed each time printing is carried out from any application.

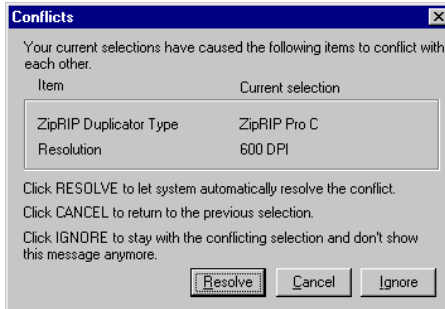


7. Setting the "ZipRIP Duplicator Type" - This selection works in conjunction with the "Resolution" setting. The installation default is "ZipRIP Pro X".

Firstly, the generic name of the Duplicator connected needs to be determined. Refer to page 6 of this manual. Click on the "ZipRIP Duplicator Type" setting. The options available are listed in the change box. The types of duplicators available for selection will depend on the resolution set.



- The duplicator types with a yellow warning sign on the icon indicating that the resolution does not match. If one of these duplicators is selected a warning dialogue box will appear indicating a conflict has occurred.



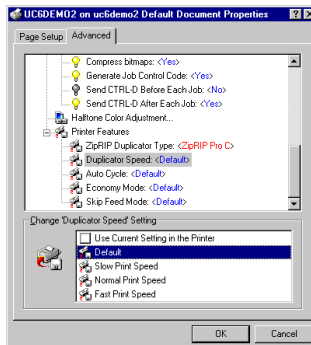
If "Resolve" is selected the "ZipRIP Duplicator Type" changes to "Use Current Settings in the Printer". This does not make a selection. Choose the correct "Duplicator Type".

If "Cancel" is selected the "ZipRIP Duplicator Type" will remain the same as originally set.

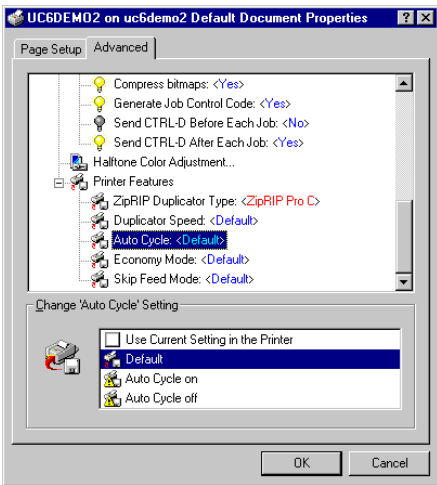
If "Ignore" is selected the "ZipRIP Duplicator Type" will change to the selection and the resolution must be changed to match the choice made.

Note: For instructions on the function of each of the following features, refer to the Duplicators operator manual.

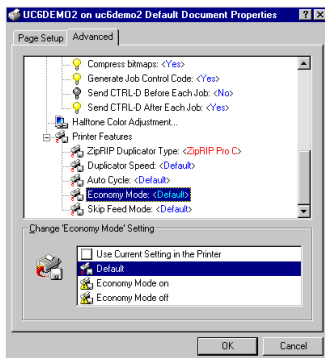
- Setting the "Duplicator Speed" - The installation setting for this is "Default". If the setting is left at "Default". The speed set on the Duplicators control panel will be selected by the UC6. Select the speed most frequently used.



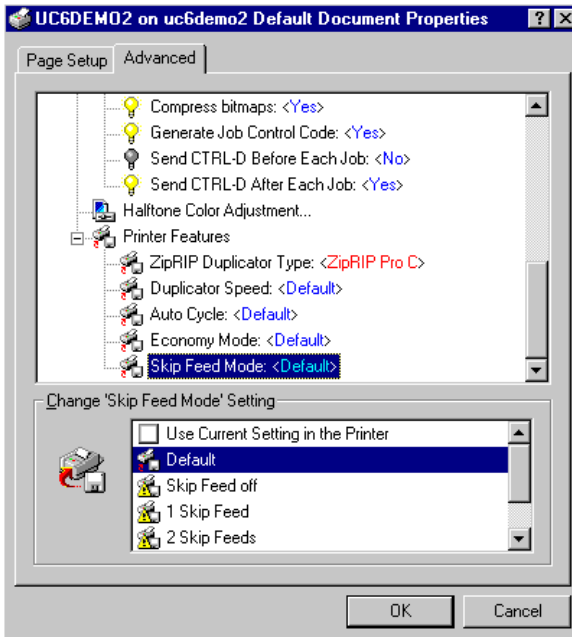
10. Setting "AutoCycle" - The installation setting for AutoCycle is "Default". When "Default" is set the UC6 will not change the AutoCycle setting on the duplicator's control panel. Selecting "AutoCycle ON", will always turn Autocycle ON when the UC6 sends a print job to the duplicator. Setting "AutoCycle OFF" will always turn Autocycle off when the UC6 sends a print job to the duplicator.



11. Setting "Economy Mode" - The installation setting for Economy Mode is "Default". When "Default" is set the UC6 will not change the Economy Mode setting on the duplicator's control panel. Selecting "Economy Mode ON", will always turn Economy Mode ON when the UC6 sends a print job to the duplicator. Setting "Economy Mode OFF" will always turn Economy Mode off when the UC6 sends a print job to the duplicator.



- Setting "Skip Feed Mode" - The installation setting for Skip Feed Mode is "Default". When "Default" is set the UC6 will not change the Skip Feed Mode setting on the duplicator's control panel. Selecting "Skip Feed Mode OFF", will always turn Skip Feed Mode OFF when the UC6 sends a print job to the duplicator. Set the intensity of "Skip Feeds" required.



- Click "OK" once all selections have been made. These settings will remain as default settings each time print is selected from an application.

Note: Some applications save the print settings applied in a document.

14. In the "Printers" dialogue box in "Settings" from the "Start" menu, right click on the UC6 printer icon. Select "Properties" from the dropped down options. Select the "Device Settings" tab. Scroll down and locate the "Form to Tray Assignment" section. All the installation defaults are "Letter".

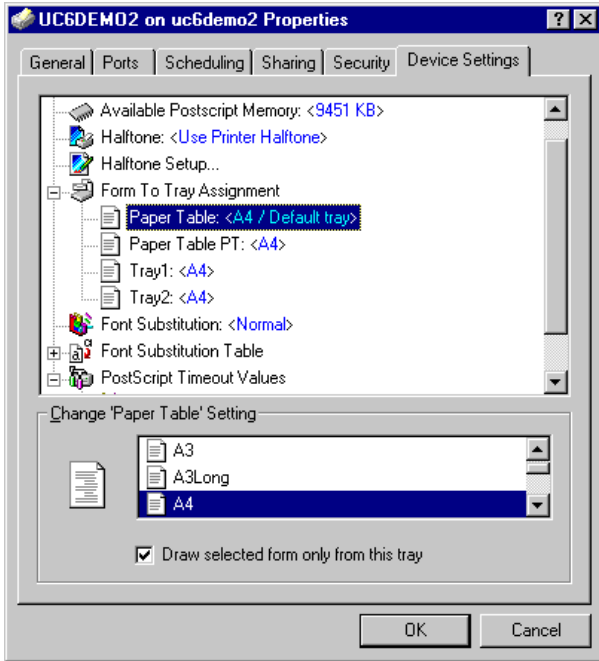
Duplicator Models not supporting extra paper trays should be set as follows:

"Paper Table" to the paper size most frequently used. Set all the other trays to "No Assignment".

Duplicator Models supporting extra paper trays should be set as follows:

"Paper Table" should be set to "No Assignment".

All other trays should be set to the most frequently used sizes installed in the trays.

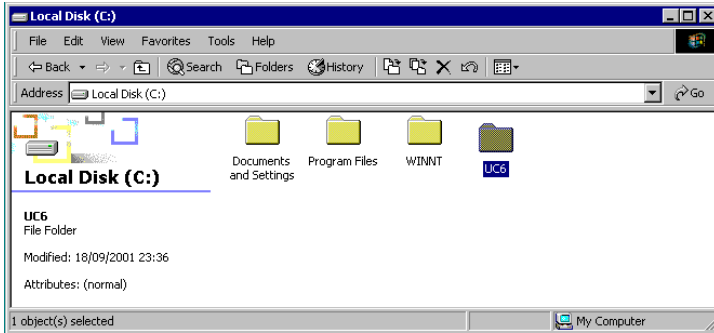


15. Select "Print Test Page" under the Generals tab. A test page will print on the Duplicator. Your UC6 is now setup and ready to use.

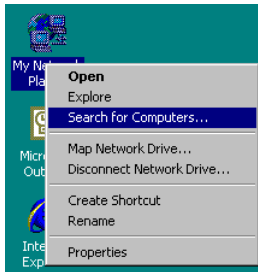
Installing Drivers for Windows 2000

To install the UC6 follow the instructions described below.

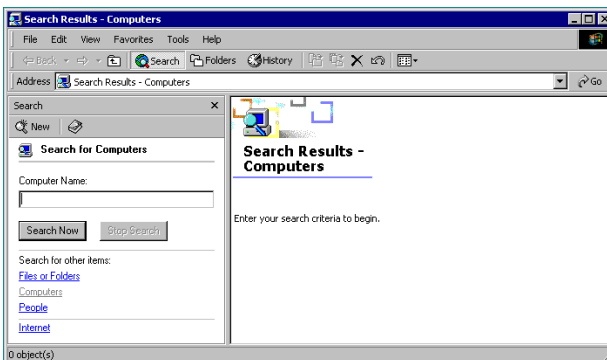
1. Create a folder on the C drive of the client computer called UC6.



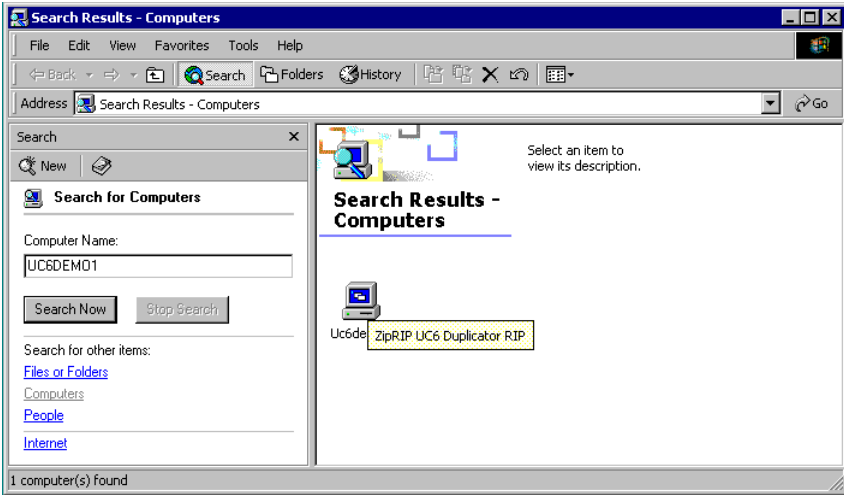
2. Right click on the "My Network Places" icon on the desktop and select "Search for Computers" from the menu options.



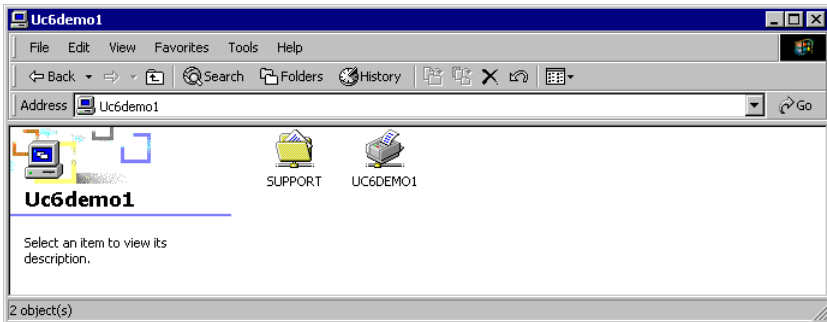
3. In the "Search for Computers" window type in the name of the UC6 where prompted. The UC6 network name is located on a sticker on the front of the UC6. Click "Search Now".



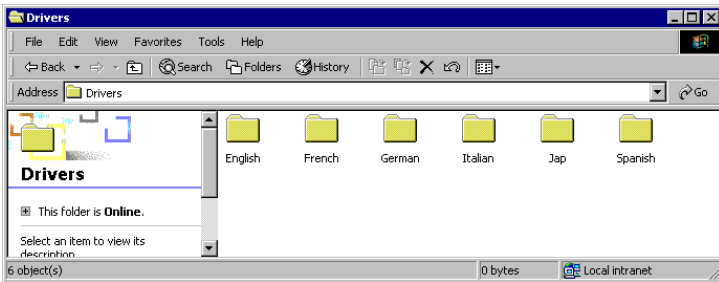
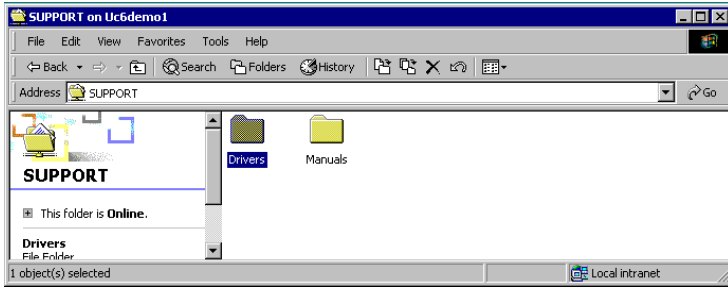
- The "Search for Computers" window will display the UC6 as a computer icon with the network name once it has been located on the network. Double click on the UC6 computer icon.



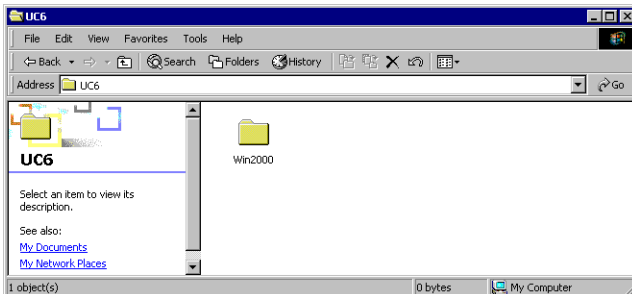
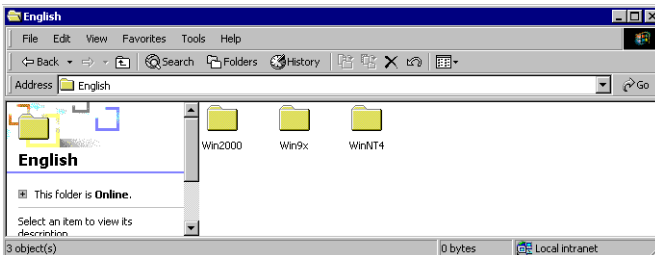
- The following window will display the folder named "Support" and the UC6 printer. Double click the "Support" folder.



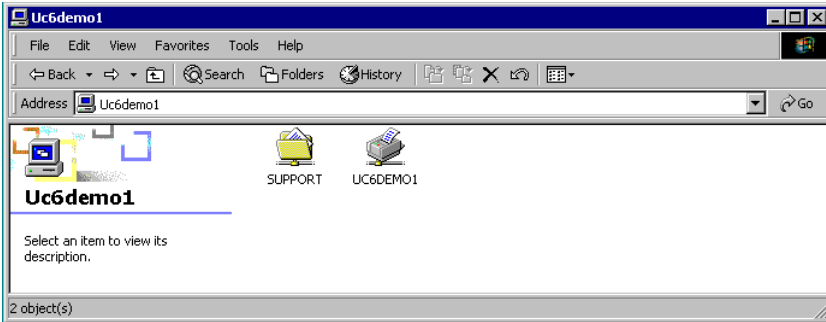
6. Double click on the "Driver" folder and select the language to be installed.



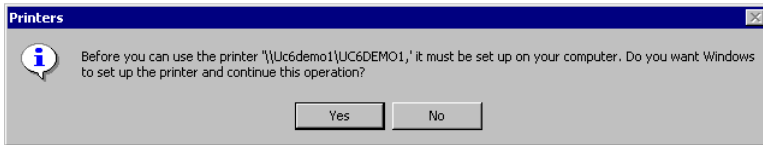
7. Copy the "Win 2000" folder from the selected language into the UC6 folder on the C drive.



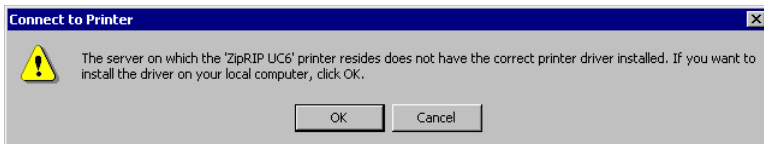
8. Repeat steps 2 to 4.
9. The following window will display the folder named "Support" and the UC6 printer. Double click the UC6 printer icon.



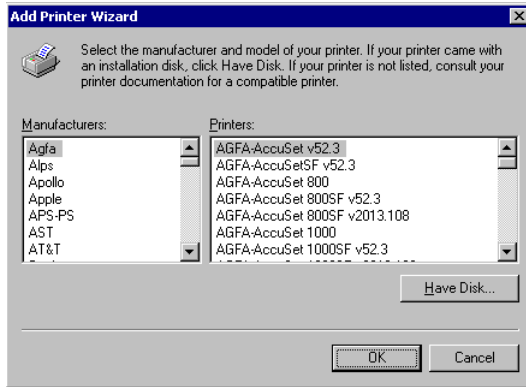
10. A window will display informing that before the printer can be used it needs to be set it up on the computer. Click "Yes".



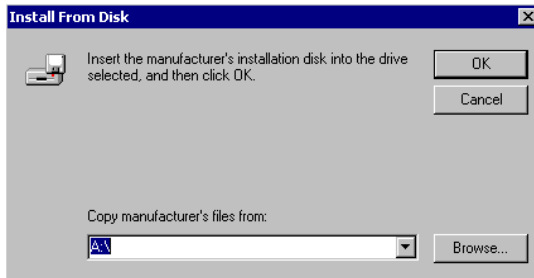
11. Click "OK" in the "Connect to Printer" window.



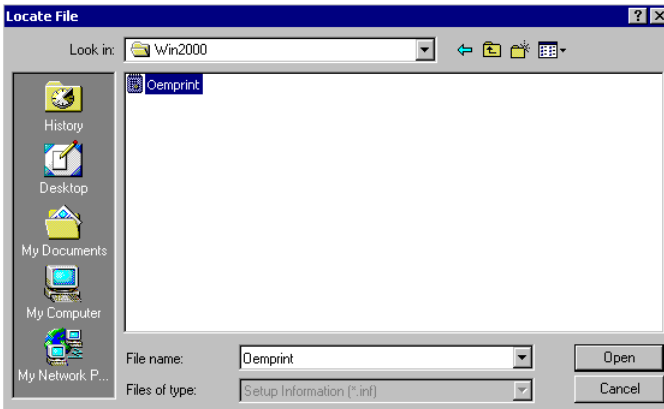
12. The next dialogue box shows a list of printer manufacturers and models. Click "Have Disk".



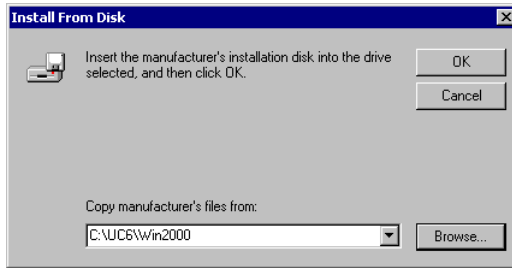
13. In the dialogue box that follows select "Browse" to locate the UC6 driver installation file.



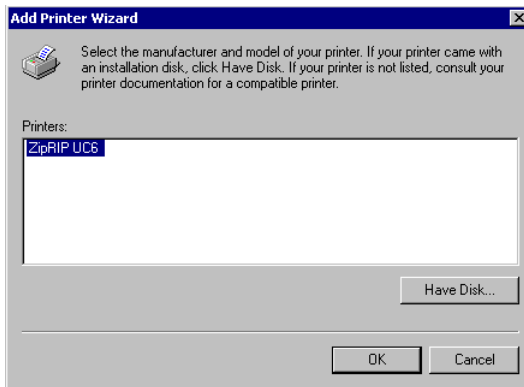
14. Select the "Imprint" file from the Win2000 folder copied onto the hard drive on the C drive and click "Open".



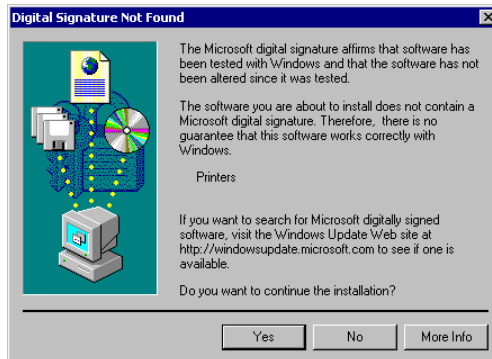
15. The "Install from Disk" dialogue box should have the following in "Copy manufacturer's files from:", C:\UC6\Win2000. Select "OK".



16. Select the "ZipRIP UC6" from the Printer windows and click "OK".



17. The driver installation will begin. Click "Yes" at the "Digital Signature Not Found" dialogue box.



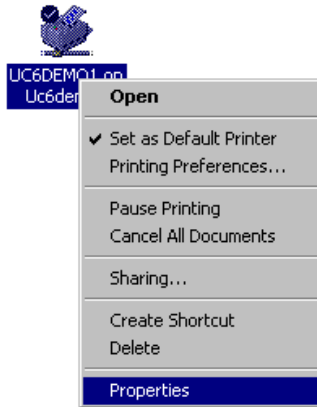
18. The driver installation will be completed. Close all dialogue boxes. The UC6 printer can now be configured for printing.

Configuring the printer

Note:

If the Duplicator Model does not support certain of the features set out below, a yellow warning sign will appear on the icon next to the selected option.

1. Select "Printers" from the "Settings" option of the "Start" menu. The UC6 printer installed will be displayed. Select the UC6 printer and right click. Select "Properties" from the dropped down menu.



2. The UC6 printer defaults are set in the "Properties" dialogue box. Select the "Device Settings" tab. Scroll down and locate the "From to Tray Assignment" section. All the installation defaults are "Letter".

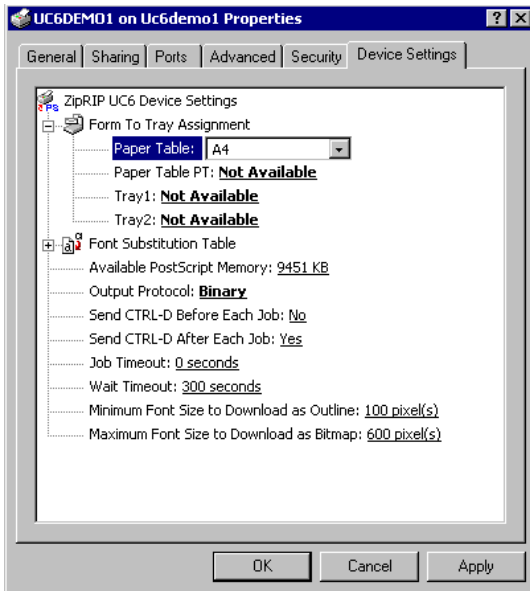
Duplicator Models not supporting extra paper trays should be set as follows:

"Paper Table" to the paper size most frequently used. Set all the other trays to "Not Available".

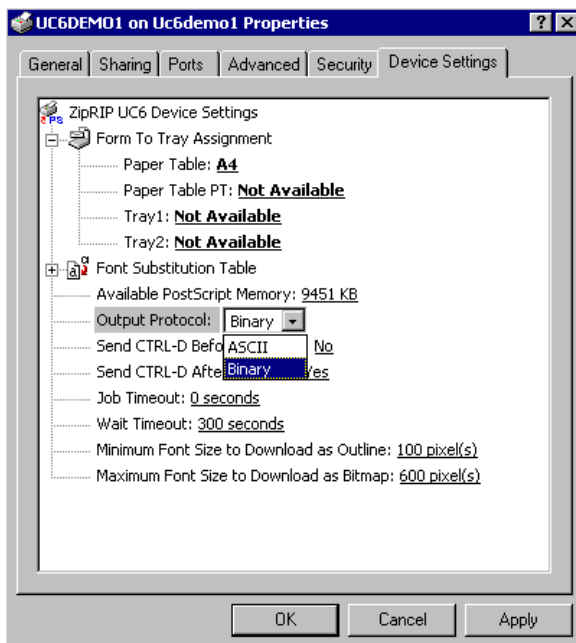
Duplicator Models supporting extra paper trays should be set as follows:

"Paper Table" should be set to "Not Available".

All other trays should be set to the most frequently used sizes installed in the trays.

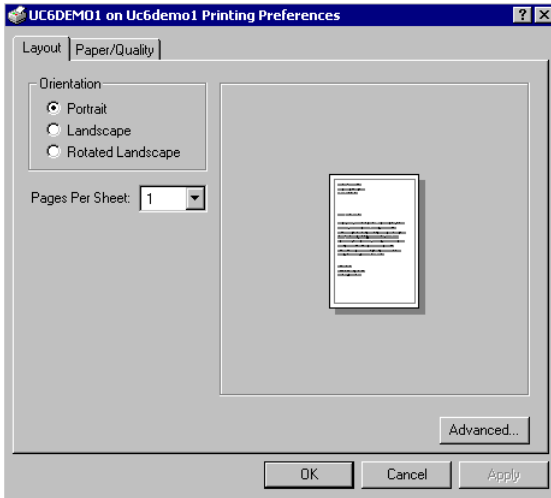


3. Locate the "Output Protocol" setting. Change it to "Binary". Click "Apply".

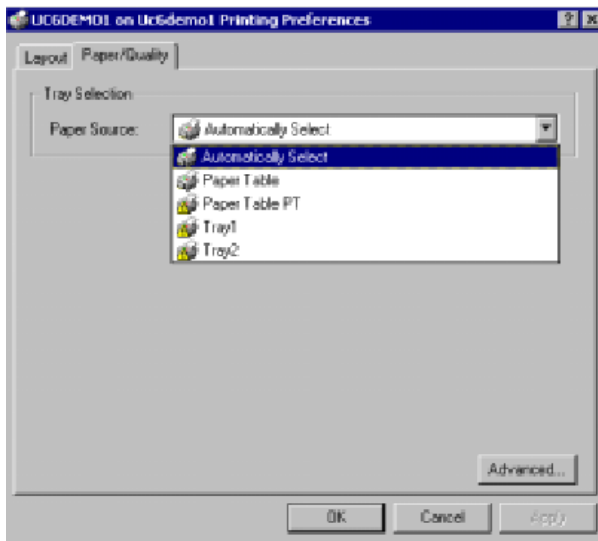


4. Select the "Generals" tab and click on "Printing Preferences". This dialogue box contains all the Duplicator Specific options.

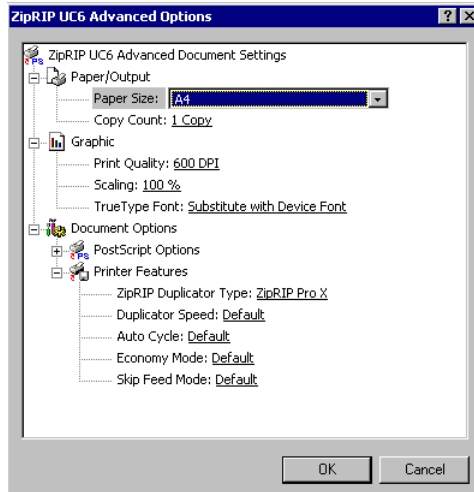
Note: All the settings in this section can be set each time printing from an application.



5. Select the "Paper/Quality" tab of the "Printing Preferences" dialogue box. Choose the "Paper Source" most frequently used.

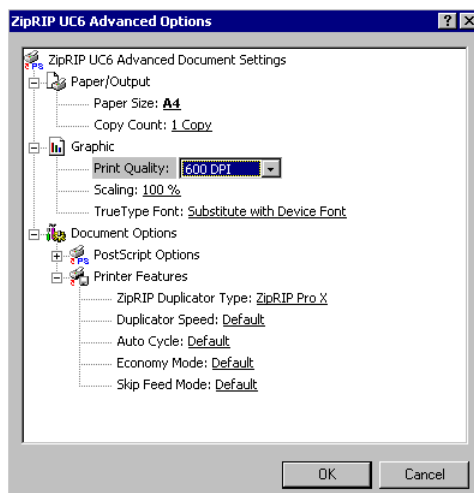


- Click on "Advanced". The "ZipRIP UC6 Advanced Document Settings" are in this dialogue box. Under "Paper Size" choose the size of paper most frequently used.

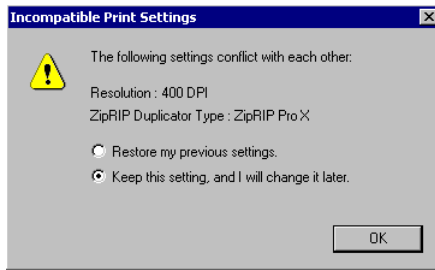


- Locate the "Print Quality" setting under "Graphic". The installation default setting is "600". Select the resolution of your Duplicator.

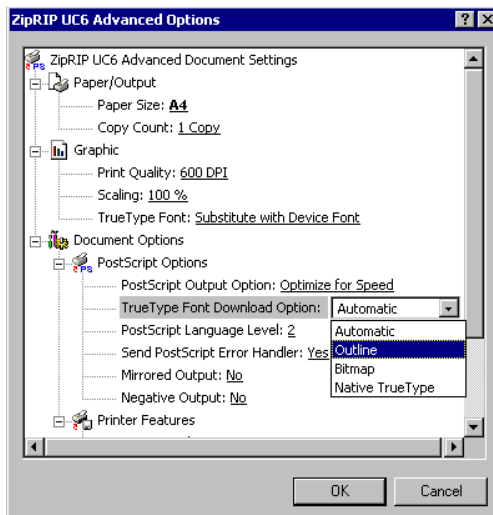
Note: This setting works in conjunction with the "ZipRIP Duplicator Type" setting under "Printer Features".



- The UC6 driver automatically presents a warning if a "Resolution" does not match with the "ZipRIP Duplicator Type" set. The "Incompatible Print Settings" dialogue box will appear. Select "Restore my previous settings" (this will set the resolution back to the default) or "Keep this setting, and I will change it later", (this will leave the resolution chosen). Click "OK".

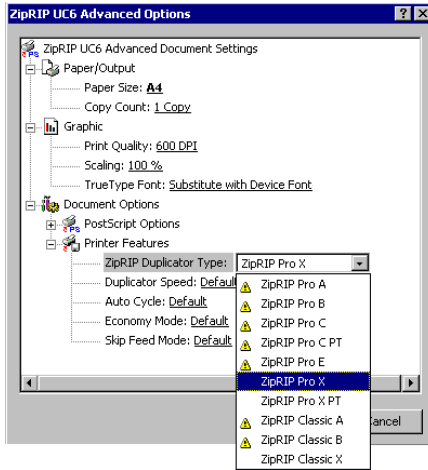


- Select "True Type Font Download" from the "Postscript Options" section. Set this to "Outline".

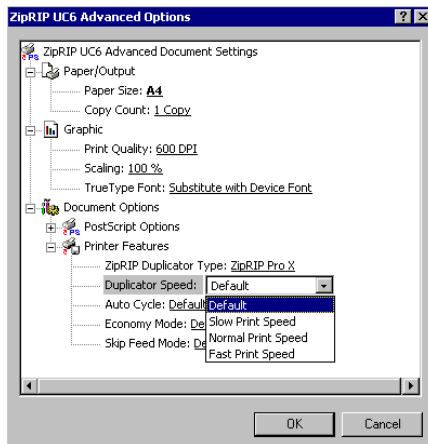


- Scroll down to the "Printer Features" section. This section contains all the Digital Duplicator specific options when printing. These are "ZipRIP Duplicator Type", "Duplicator Speed", "AutoCycle", "Economy Mode" and "Skip Feed Mode". These features can be changed each time you print from any application.

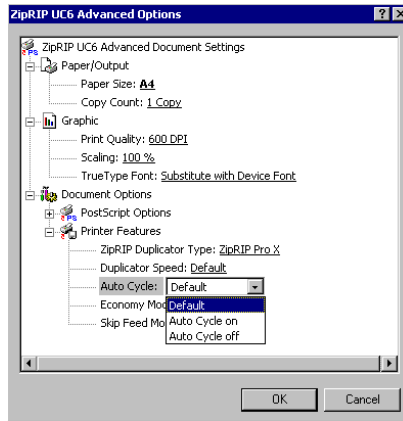
11. Setting the "ZipRIP Duplicator Type" - This selection works in conjunction with the "Resolution" setting. The installation default is "ZipRIP Pro X". Firstly, you need to determine the generic name of the Duplicator you are printing to. Refer to page 6 of this manual. Click on the "ZipRIP Duplicator Type" setting. The options available are listed in the change box. The types of duplicators available for selection will depend on the resolution set.



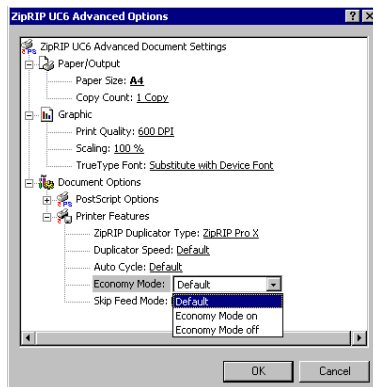
12. Setting the "Duplicator Speed" - The installation setting for this is "Default". If you leave the setting at "Default". The UC6 will leave the speed set on the Duplicators control panel. Select the speed most frequently used.



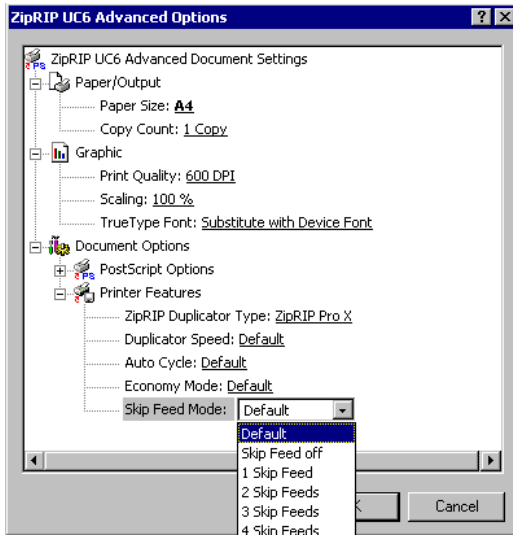
13. Setting "AutoCycle" - The installation setting for AutoCycle is "Default". When "Default" is set the UC6 will not change the Autocycle setting on the Duplicators control panel. Selecting "Autocycle ON", will always turn Autocycle ON when the UC6 sends a print job to the Duplicator. Setting "AutoCycle OFF" will always turn Autocycle off when the UC6 sends a print job to the Duplicator.



14. Setting "Economy Mode" - The installation setting for Economy Mode is "Default". When "Default" is set the UC6 will not change the Economy Mode setting on the Duplicator's control panel. Selecting "Economy Mode ON", will always turn Economy Mode ON when the UC6 sends a print job to the Duplicator. Setting "Economy Mode OFF" will always turn Economy Mode off when the UC6 sends a print job to the Duplicator.

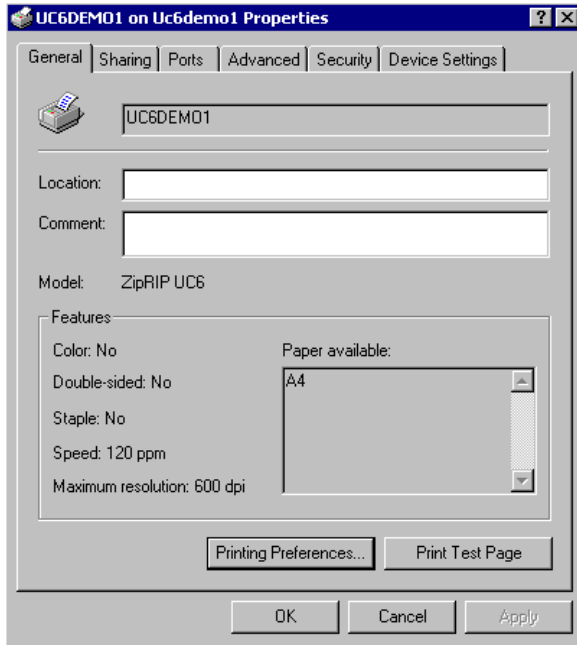


15. Setting "Skip Feed Mode" - The installation setting for Skip Feed Mode is "Default". When "Default" is set the UC6 will not change the Skip Feed Mode setting on the Duplicators control panel. Selecting "Skip Feed Mode OFF", will always turn Skip Feed Mode OFF when the UC6 sends a print job to the Duplicator. Set the intensity of "Skip Feeds" required.



16. Click "OK" once all selections have been made. These settings will remain as default settings each time print is selected from an application.

Note: Some applications save the print settings applied in a document.



17. Select "Print Test Page" under the Generals tab. A test page will print on your Duplicator. Your UC6 is now setup and ready to use.

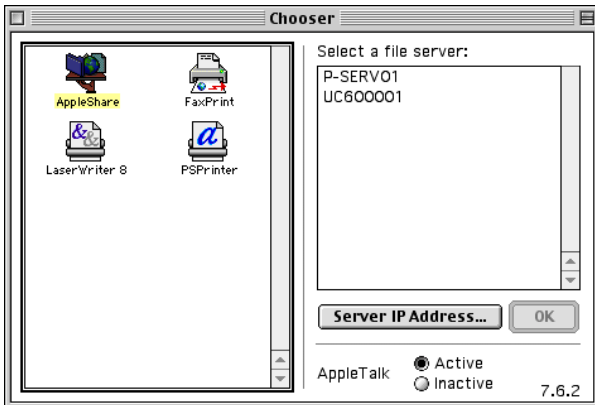
Installation on an Apple Macintosh

To install the UC6 follow the instructions described below.

1. Click on the "Chooser" in the Apple icon menu.
2. Click and select the "AppleShare" icon from the dialogue box on the left.

Select "UC6xxxxx" and click "OK".

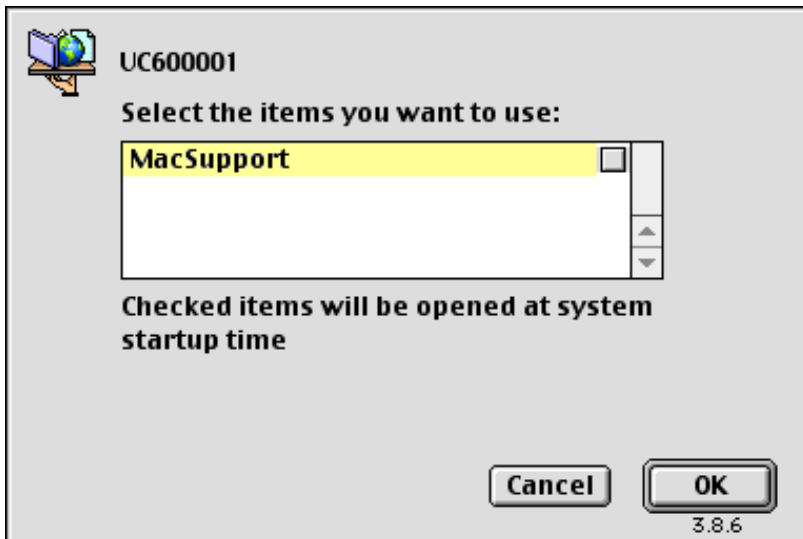
Note: The UC6xxxxx" number will vary according to the serial number of your UC6.



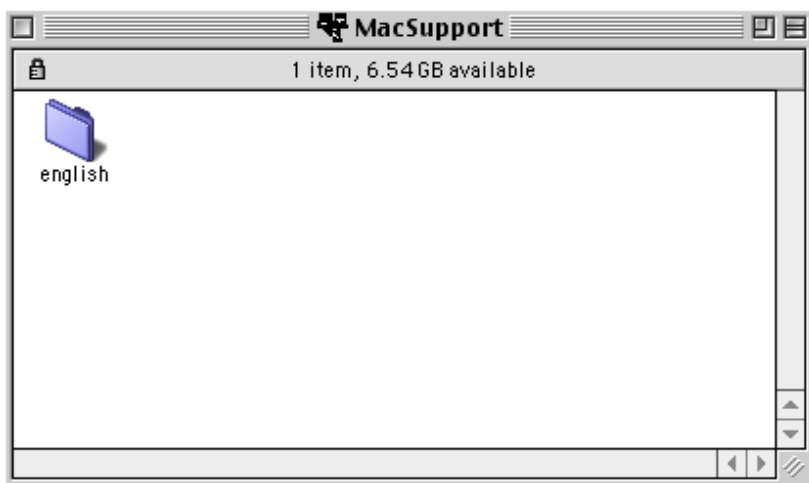
3. In the "Connect to file server" dialogue box select "Guest" and click "Connect".



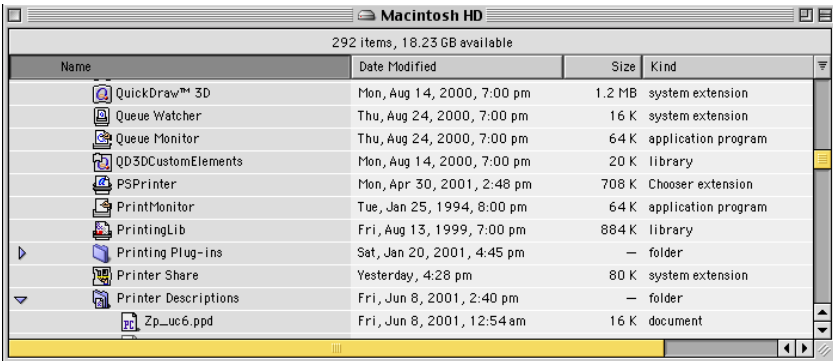
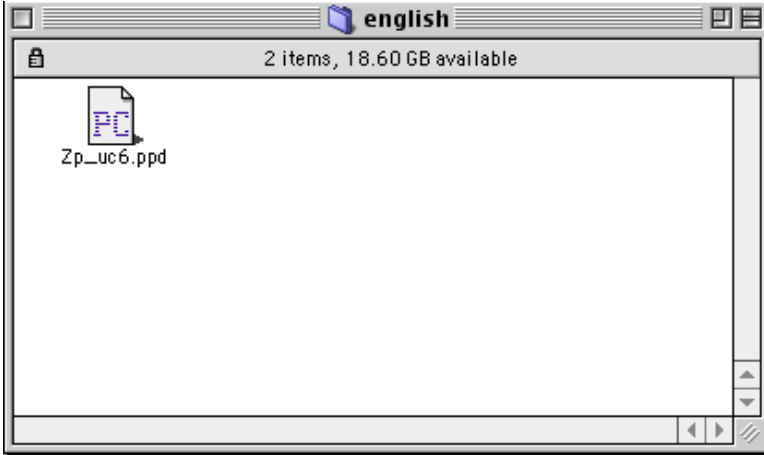
4. Select "MacSuprt" and click "OK". An AppleShare icon is created on your desktop.



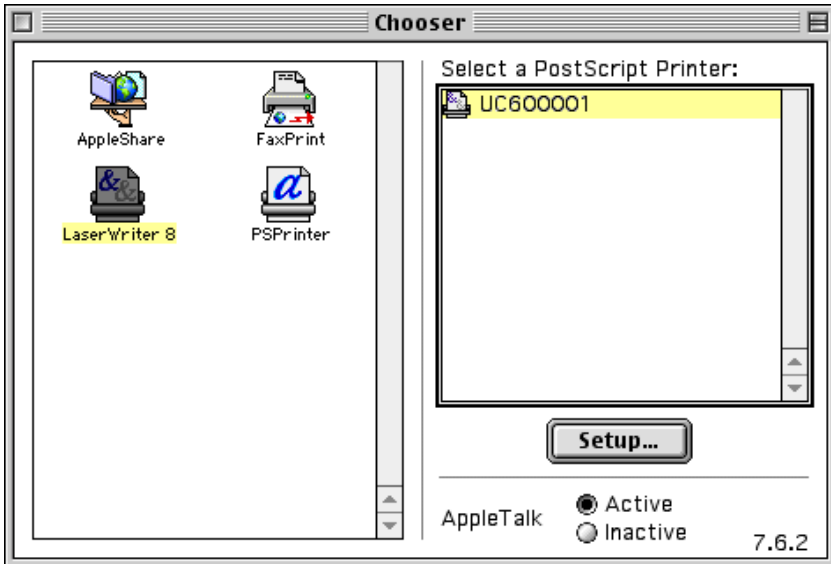
5. Double click on the icon and then double click on the folder of the language choice.



- The file "ZP_UC6.PPD" is displayed. This PPD file must be copied into the Printer Descriptions folder in the Extensions Manager of the Systems Folder on the Mac hard drive.



7. Select the Chooser from the Apple icon menu again. Click on the "LaserWriter8" icon on the left.



8. A list of printers available are displayed. Select the UC6 "UC6xxxxx" and click setup.
Note: xxxxx will vary according to the UC6 shared name.
9. The printer will automatically be set up and it will prompt you to direct it to the PPD which you have copied into the Printer Descriptions folder.
10. The UC6 is now installed onto the Apple Macintosh and ready for use.

Postscript Fonts

Below is a list of the postscript fonts that are built into the interpreter loaded on the UC6. Available fonts will be dependant on the current PPD file installed.

Arial	Arial-Bold	Arial-BoldItalic
Arial Italic	ArialNarrow	ArialNarrow-Bold
ArialNarrow-BoldItalic	ArialNarrow-Italic	
AvantGarde-Book	AvantGarde-BookOblique	AvantGarde-Demi
AvantGarde-DemiOblique		
BookAntiqua	BookAntiqua-Bold	BookAntiqua-
BoldItalic		
BookAntiqua-Italic	Bookman-Demi	Bookman-DemiItalic
Bookman-Light	Bookman-LightItalic	BookmanOldStyle
BookmanOldStyle-Bold	BookmanOldStyle-BoldItalic	BookmanOldStyle-Italic
CenturyGothic	CenturyGothic-Bold	CenturGothic-BoldItalic
CenturyGothic-Italic	CenturySchoolbook	
CenturySchoolbook-Bold	CenturySchoolbook-BoldItalic	CenturySchoolbook-Italic
Courier:Standard	Courier-Bold	Courier-BoldItalic
Courier-BoldOblique	Courier-Italic	Courier-Oblique
Helvetica	Helvetica-Bold	Helvetica-BoldOblique
Helvetica-Narrow	Helvetica-Narrow-Bold	Helvetica-Narrow-BoldOblique
Helvetica-Narrow-Oblique	Helvetica-Oblique	
MonotypeCorsiva	MonotypeSorts	
NewCenturySchlbk-Bold	NewCenturySchlbk-BoldItalic	NewCenturySchlbk-Italic
NewCenturySchlbk-Roman		
Palatine-Bold	Palatine-BoldItalic	Palatine-Italic
Palatino-Roman		
Symbol		
Times-Bold	Times-BoldItalic	Times-Italic
Times-Roman	TimesNewRoman	TimesNewRoman-Bold
TimesNewRoman-BoldItalic		TimesNewRoman-Italic
ZapfChancery-MediumItalic		
ZapfDingbats		

Frequently Asked Questions

Q: How far can I have the Digital Duplicator from the UC6?

*A: The official specification allows for 6 feet (approx. 2 metres) cable.
This cable is supplied with the UC6.*

Q: How many computers can you run from the UC6?

A: As many computers as are on your network.

Q: Will the UC6 work with a laptop or notebook computer?

A: Yes, all computers connect to the UC6 via an 10/100mbit ethernet port as long as the computer has networking capabilities.

Q: How much RAM memory does the UC6 have?

A: It comes standard with 64 megabytes RAM.

Q: Can you add additional memory?

A: No, the UC6 comes with maximum memory installed as standard.

Q: Must you configure all software when you install the UC6?

A: No. Once the driver is installed in any operating system on the computer, all software application programs can use it.

Q: Will the UC6 work with Windows95? Windows 98? Windows ME? Windows NT? Windows 2000?

A: Yes. Printer drivers must be installed for each operating system.

Q: Will the UC6 work on an Apple Mac?

A: Yes. The UC6 can be connected to any network platform environment.

Q: Will the UC6 work with all application software programs?

A: The customised printer drivers provided allow all operating system programs to send documents to the UC6.

Q: What fonts are built into the UC6?

A: Postscript fonts. Listed on page 44 of this manual.

Q: Can you reverse scan with the UC6 and the Digital Duplicator?

A: No.

Q: When printing from Windows 2000 the UC6 has printed an error message.

A: In the properties of the Windows 2000 driver ensure that the Output Protocol has been set to "Binary".

Q: When I send a print job to the Duplicator, Autocycle goes off, copy quantity is set to 2 and 1 sheets of paper is printed with the image printed in the incorrect position.

A: This is the UC6s paper mismatch action. If the paper size selected in the driver, is not found loaded on the Duplicator, the UC6 disables autocycle and prints a proof. If you have printed a single page document, to recover from the paper mismatch you will have to send the job from the application again, ensuring that the paper size selected is loaded on the Duplicator. If you have printed a multipage document, to recover from the mismatch you must load the correct size paper into the Duplicator. The UC6 will continue to print the remainder of the document, however the UC6 will not recover the page that the mismatch occurred on. You will have to re-send this page.

Q: The image I have printed is too large or too small.

A: Ensure the resolution and the ZipRIP Duplicator Type are correct fro the Duplicator you are printing to.

Q: Can you set the number of copies to print from the computer?

A: Yes, all newer Duplicator models allow you to set the copy count from the computer.

Q: If I have a software or hardware question, who do I call?

A: Your local sales/service organisation should be contacted first or connect to the website www.ziprip.com.

Q: How do I print to paper sizes not defined by the driver?

A: Depending on the Duplicators maximum size, you can define any paper size up to a maximum of 297 x 420 mm. This is done by selecting the custom page size in the driver. Custom size papers must be loaded on the paper table of the Duplicator.

Q: Missing Tabs in the Printer Properties dialogue box.

A: There are two possible causes of this problem:-

- 1. Corrupt UC6 driver installation.*
- 2. Corrupt Windows Operating System file(s)*

First try solving the problem by reinstalling the UC6 printer driver. If this does not solve the problem then you will need to reinstall the Windows Operating System.

WHY?

A: Certain printer installations can overwrite or modify some of the Windows Operating System files used by the UC6 driver. As a result some of the dialogue boxes go missing. By restoring the Operating System files back to the original version the dialogue boxes reappear and work as normal.

Q: I keep getting a timeout error printing from Windows 95.

A: Increase the time out setting within the printer driver. These are found under the details tabs in the properties window. Set "not selected" to 300 seconds. Set "transmission retry" to 9999 seconds.

Troubleshooting Postscript

The Postscript language can become quite complex as intricate combinations of encapsulated Postscript files and fonts are generated by diverse application programs. As a result incompatibilities may arise which only become apparent when the RIP attempt to process the file.

Typical problems include missing fonts, missing pictures and incorrect device selection within a Postscript file. This section contains information about potential problems and how to avoid or resolve them.

Fonts

Postscript files should contain descriptions of any special fonts they use. A list of the fonts loaded on the RIP can be found on page 55 of this manual.

Any font not included in this list and used in a document, must be included within the Postscript file. The other fonts can optionally be omitted. However, for applications where kerning or other spacing factors are critical, we advise that all fonts are downloaded in the Postscript files. This is because there are some subtle differences in versions of fonts present on many computers.

When using Macintosh computers with the Suitcase program, you must ensure that both the screen and printer versions of the fonts are present in the correct locations on the machine you are printing from. If the printer version is missing, then a document may appear correctly on the screen, but not print out correctly.

On PC work stations with True Type fonts, make sure the printer driver you use is set up to send the fonts to the printer as Type 42 or Type 1. You have the option of sending fonts in Type 3 format (bitmaps) or to do a substitution - these options should not normally be used.

Missing fonts are sometimes difficult to track down if they are used in EPS files. Unfortunately, some desktop publishing packages don't always report which fonts are needed by EPS file, and whether these fonts are missing. The best advice is to make sure you know what fonts all the elements of your documents need and to make sure they are installed correctly.

Using EPS Files

When an EPS file is placed in a document most desktop publishing packages embed a reference to the EPS file. When the document is printed the EPS file is then copied into the Postscript file being sent to the RIP. Most packages will generate an error message if the EPS file can not be found, however, in some cases the error might be missed or not generated. In these cases the EPS image will be missing from the page once it has been processed. To avoid this ensure that all links to EPS files are kept up to date. Check also that EPS files are correctly named and in the right location.

Device Problems

Files are largely device independent, which means that a Postscript document should produce equivalent output on different printing devices. Problems can occur if you try to RIP a Postscript file generated for a printer which has different capabilities - e.g. different paper sizes, margins, colour etc. The file may RIP, but the results may be partially incorrect. To avoid these problems, always use the supplied Postscript printer driver and printer description files.

Problems can also occur printing encapsulated Postscript files. These do not contain any information about the page size or the printing device (in fact they must not include any such information). Therefore, these files may not RIP correctly. If you have problems, you should include the EPS file within a desktop publishing package page and output this to a Postscript file using the supplied printer driver.

Postscript Errors

If there are errors in any Postscript files (e.g. missing fonts or graphical images), then such errors are printed out on the Digital Duplicator. If a serious error message occurs when ripping a file, there are some steps you can take to resolve the problem:

Check the fonts and pictures used in the document. Are they in the correct location on your hard disk?

Check that the correct driver and printer description files have been selected when out putting your document. Certain applications such as PageMaker require PPD files to be installed within a particular directory.

Remove EPS and other imported files from the document to ascertain whether one of the graphic files is corrupt.

If none of the above resolves a problem send a description of the error to the ZipRIP website. Please include all details such as PC specifications, Operating System, Application and version being used as well as a detailed account of the error and any preceding events that might have led to it. **www.ziprip.com**